

Visualizing Public School Community Assets

Test it out!
community-capital-duke.oit.duke.edu



We just moved to a new school community - where can we find resources in the area?

Community Resource Coordinators



I want an easy way to provide students and their families with information about their school's community

Families



Data Data Everywhere!
 40,000 distances
 800 resources
 50 schools
 6 counties

OUR SOLUTION

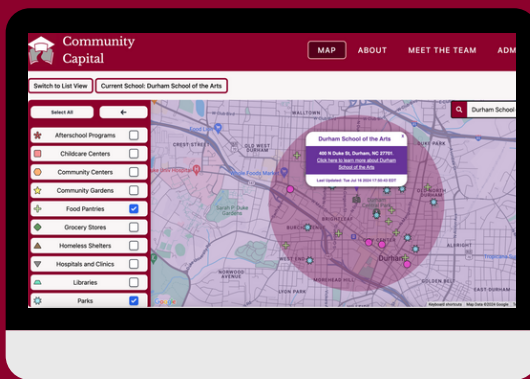
A dashboard visualizing public schools and their surrounding resources to inform residents about what makes their community rich

Why Us?
 Our website has a community-centric approach compared to competitors.

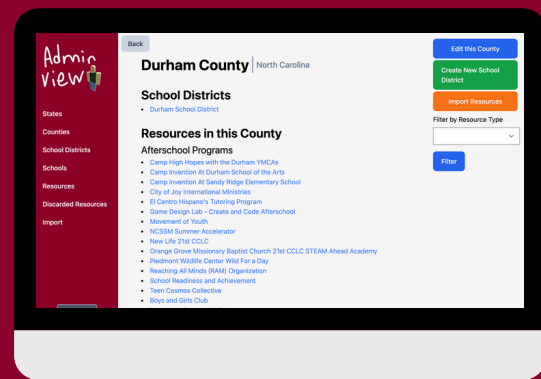


USER

ADMIN



- Interactive map popups
- Display nearby resources
- Accessible list view



- Add new counties to database
- Import CSV files of schools
- Scheduled resource scraping

Dev Team

Team Leads: Harry Thakkar, Sheri Tibbs, Vanessa Simmons

Members: Andrew Li, Ciaran Burr, Divyansh Nayan, Kayla Liang, Oliver Wang, Phoebe Chadowitz



Duke Code